

MWB

Division
SHIPBUILDING

...the yard
for specialized vessels



The launching lift of the research ship 'Solea' (a shallow water vessel) by the MWB floating crane

MWB – a yard with considerable experience in building small and large, shallow water, specialized ships.

MWB has, over the past few years, produced four survey ships for geo-physical research in the ocean and on the seabed.

The ships are conceived for operations in deep water in the coastal zone as well as in shallow waters (rivers, deltas, estuaries, lagoons, coral reefs, marshes and shallows). The ships are designed that they can be modified for various operations, for instance as survey vessels, or ships with facilities for workshops and laboratories, hospital ships or research vessels.





Navigating bridge

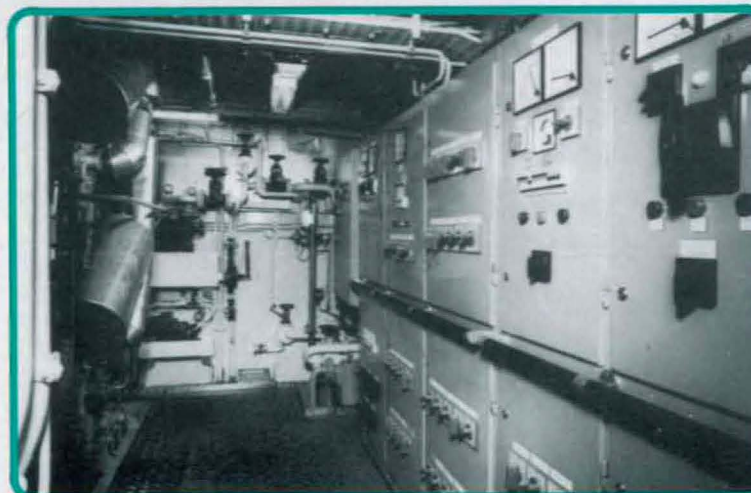
The outstanding features of these fully developed ships:

- shallow draught
- low ship's weight by the use of combined constructional techniques steel/aluminium
- Excellent cargo carrying capability due to the ship's low weight
- First class design enabling rapid dismantling of various components to increase cargo space



Survey room

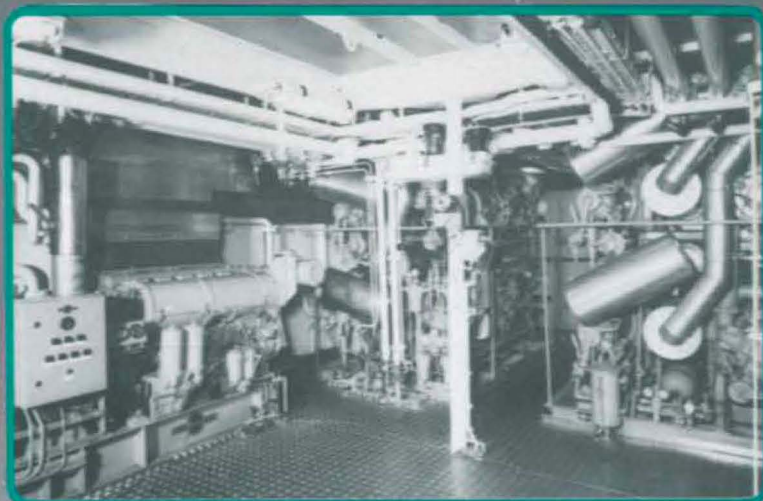
- extremely good manoeuvrability, particularly at low speed, via two rudder propellers and a bow thruster
- no problems at ebb tide when the ship may rest on its flat bottom
- removable wooden planking protects the underwater hull from possible damage by running aground on rocks or corals



Control room

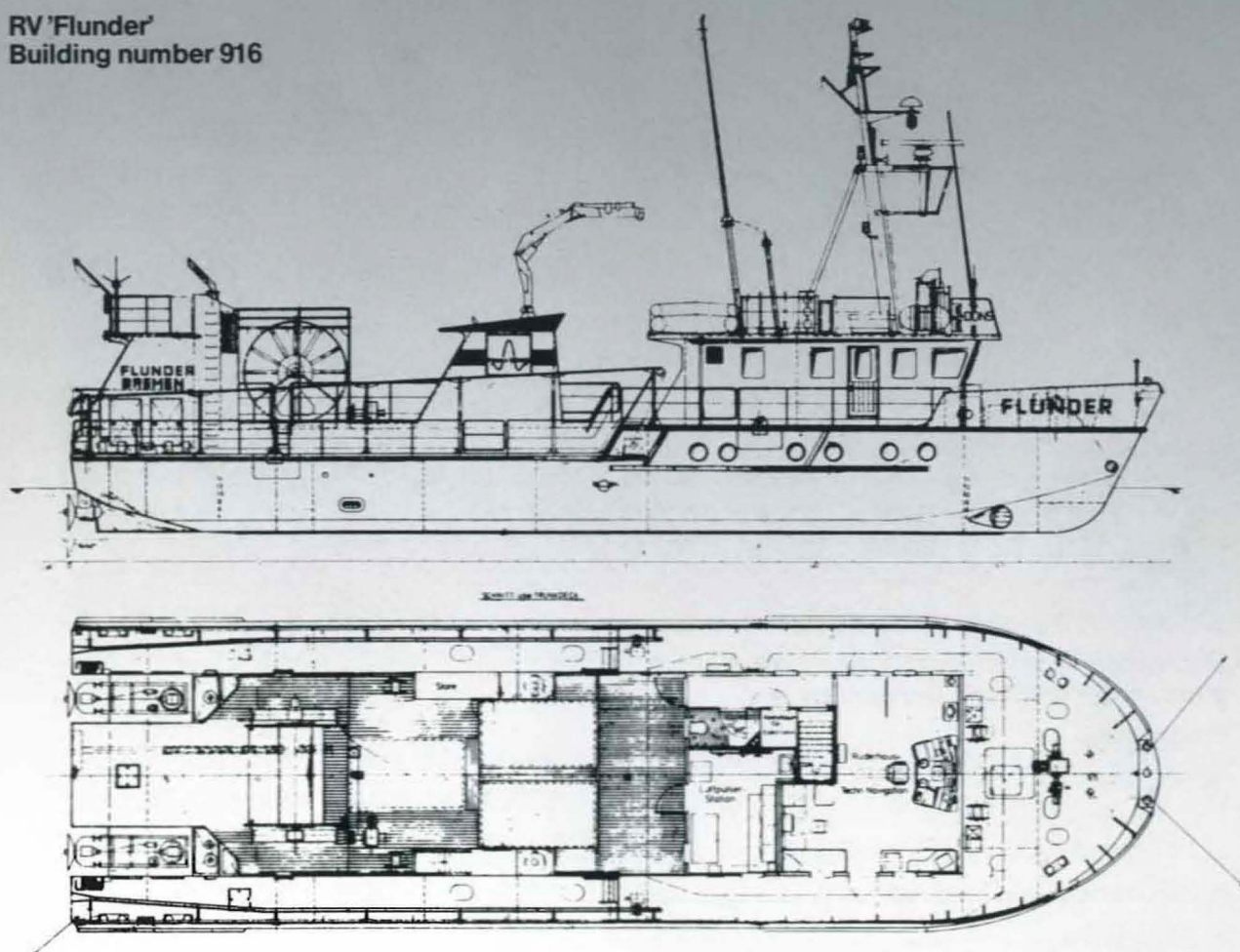
- plenty of space on deck for containers
- plenty of room within the ship for survey and laboratory facilities and for the crew. Flexible mounted engines ensure minimal vibration whilst sound damping provides for comfort
- easy repair and maintenance due to the accessibility of the power system (for instance, the possibility of changing a propeller under floating condition)

The ship is driven by twin propellers each delivering 225 kW. Speed about 10 knots



Engine room

RV 'Flunder'
Building number 916



Technical specification:

Length over all: 29.4 m
Beam: 8.0 m
Moulded breadth: 2.05/2.80 m
Draught: 1.25 m

Tonnage:
Speed:
Crew:
Classification:

158 grt
approx. 10 knots
4
GL+100A4K





MWB MOTORENWERK BREMERHAVEN GMBH

MWB Motorenwerk Bremerhaven GmbH

— a company with an extensive working
programme and high technology —

Programme

- Shipyard
 - Newbuilding
 - Repairs
- Mechanical engineering
- Electronics
- Electro-technology
- Vehicles
- Underfeed stokers
- Industrial Plant Construction
- Consulting
- Special activities

Main plant Bremerhaven-Kaiserhafen 1
Barkhausenstraße · D-2850 Bremerhaven
Telephone (04 71) 4 88-1 · Telex 2 38 888
Telefax (0471) 4 33 03

Branch plant Langen
Bremerhavener Straße · D-2857 Langen
Telephone (0 47 43) 70 67

Branch plant Wilhelmshaven
Südstrand 108 · D-2940 Wilhelmshaven
Telephone (0 44 21) 4 31 44

Branch plant Wolfsburg-Fallersleben
Hafenstraße 4 · D-3180 Wolfsburg 12
Telephone (053 62) 5 22 92